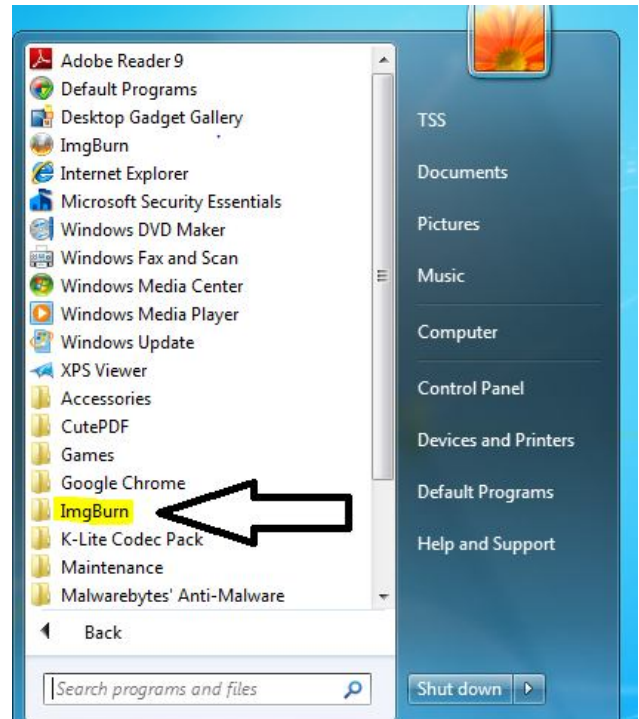


ImgBurn

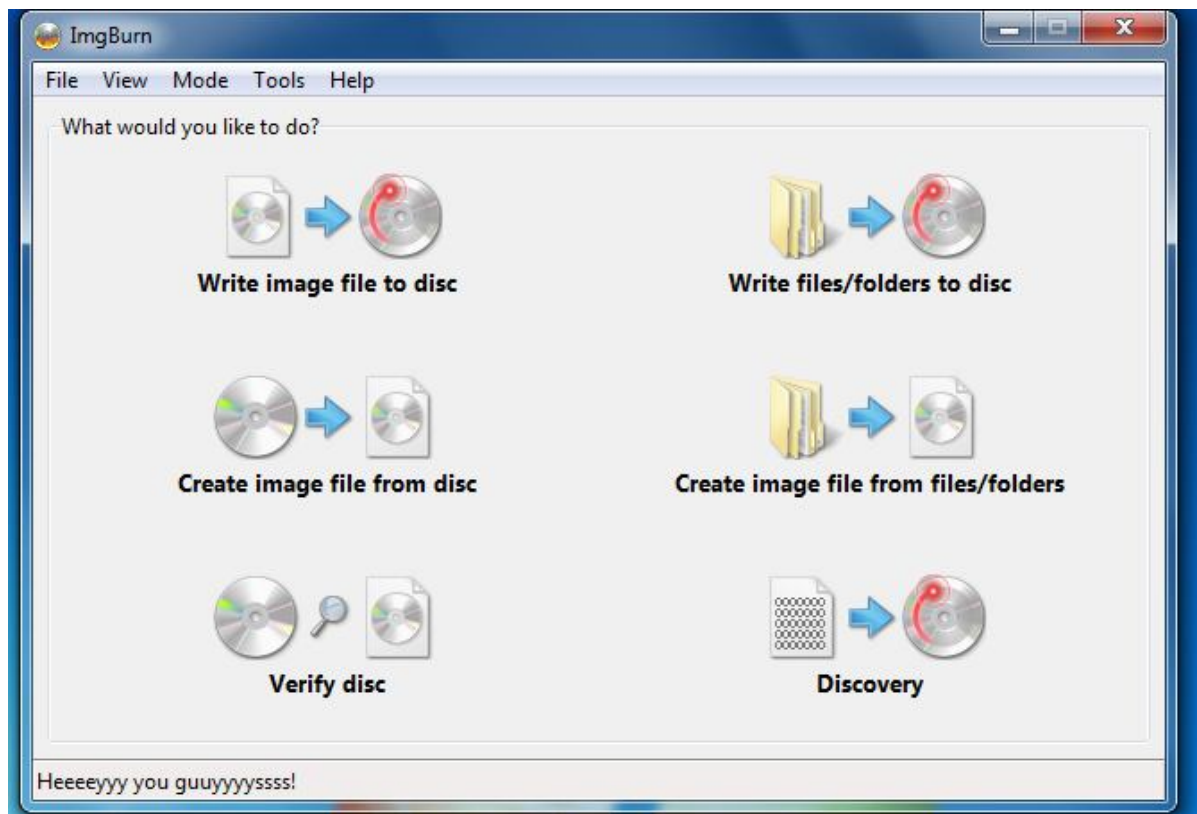


Imgburn is a program to burn files and images to a CD-R/RW or DVD-R/RW.

To start this program navigate to **File > All Programs > ImgBurn** and Choose ImgBurn. (see image to the right)



When the program opens it will give you several options. (see image below)



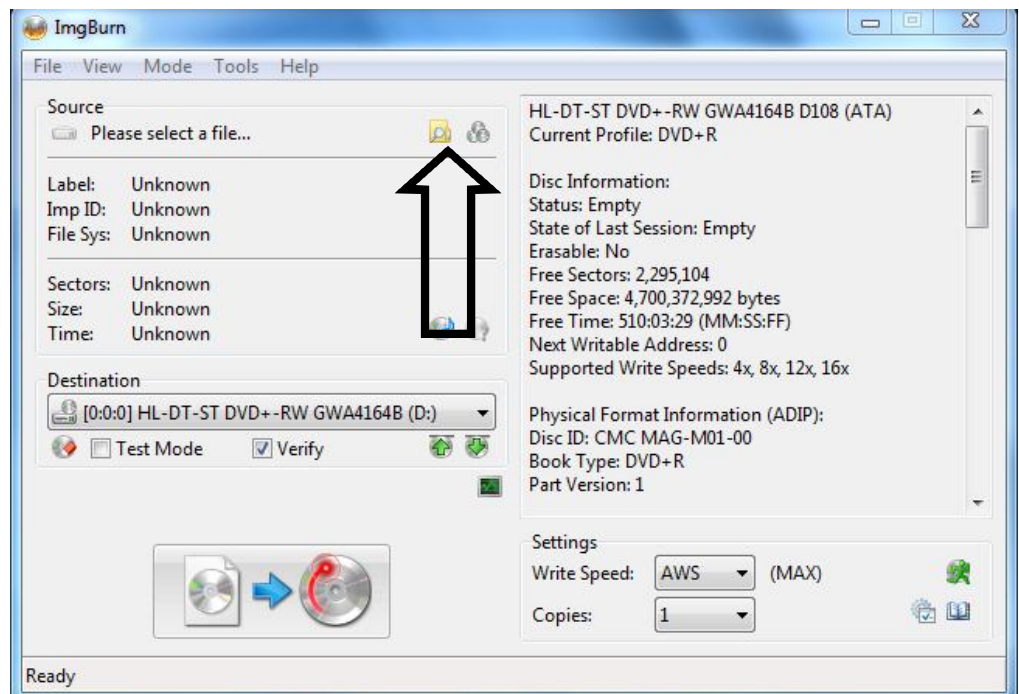
ImgBurn can burn an ISO (CD image file) to a CD/DVD. It can also write files / folders to a CD/DVD, create an ISO from a CD/DVD, and create an ISO from files/folders. "Verify disc" will check if the disc is 100% readable. "Discovery" will give you information about the CD and allow you to erase rewritable discs.

Write image file to disc.



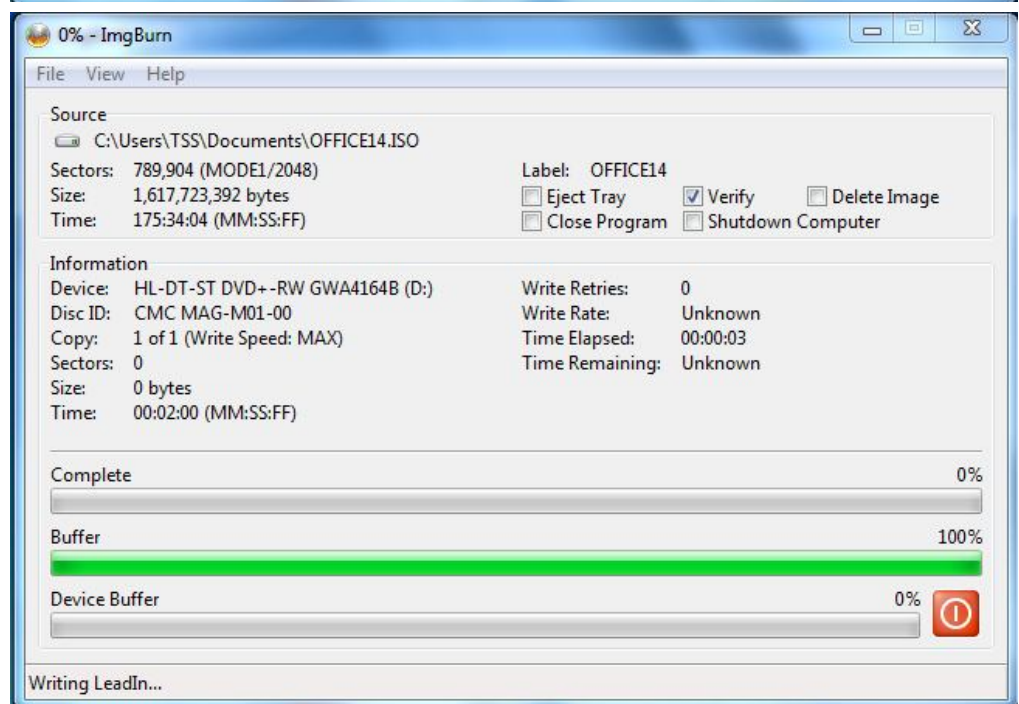
Click on the **Write image file to disc** menu option.

On the new window, click the **browse file folder** button to choose the correct ISO file. Insert a blank CD/DVD and click the **Write image file to disc** button to continue.



The ImgBurn progress window will open and show the full progress.

When finished it will verify that it completed successfully.



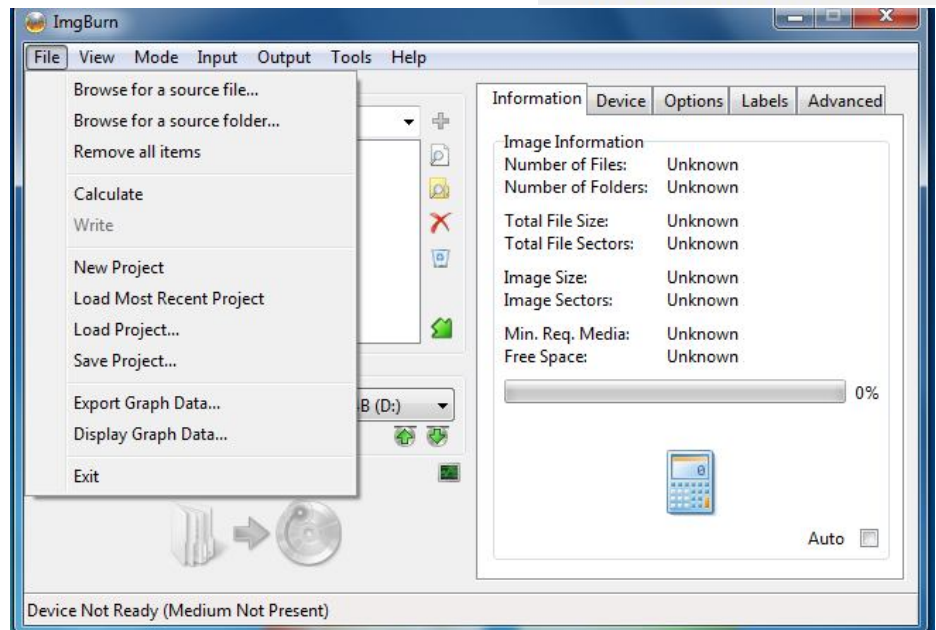
Write files/folders to disc



Click on the **Write files/folder to disc** button.

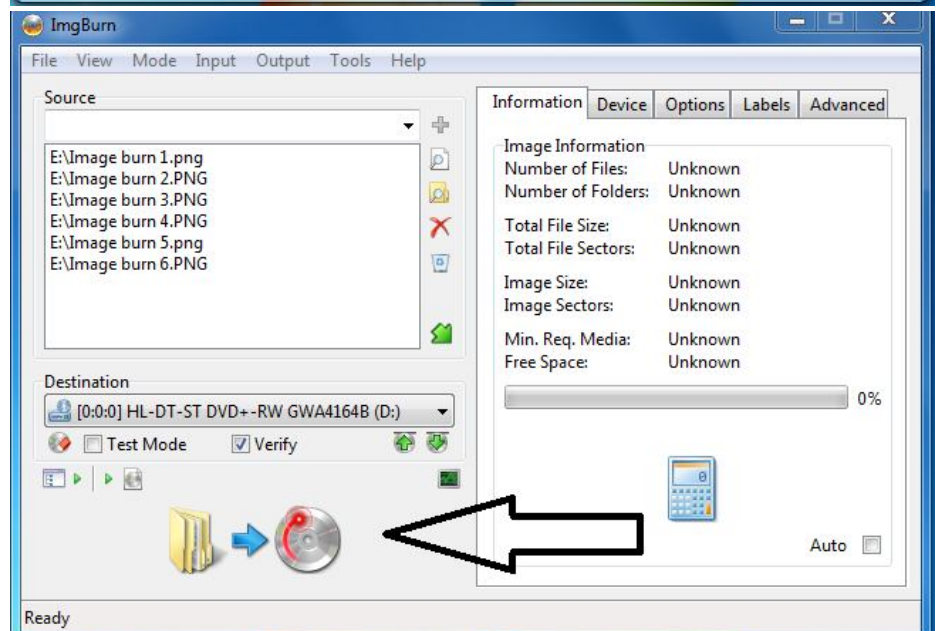
Click **File > Browse for a source file** to find correct files.

Insert a blank CD/DVD.



Press the **Write files/folders to disc** button to begin burning CD/DVD.

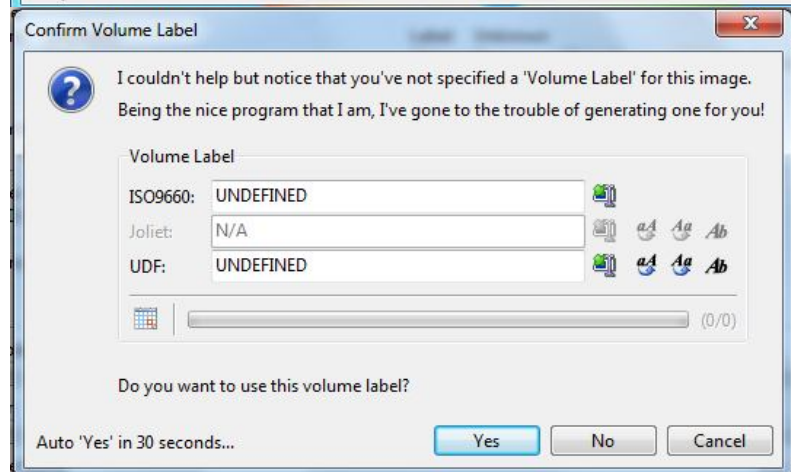
A **Confirm Volume Label** box will open. This will allow you to rename the disc.



Click **yes** to continue.

A progress window will open.

When finished it will verify that it completed successfully.



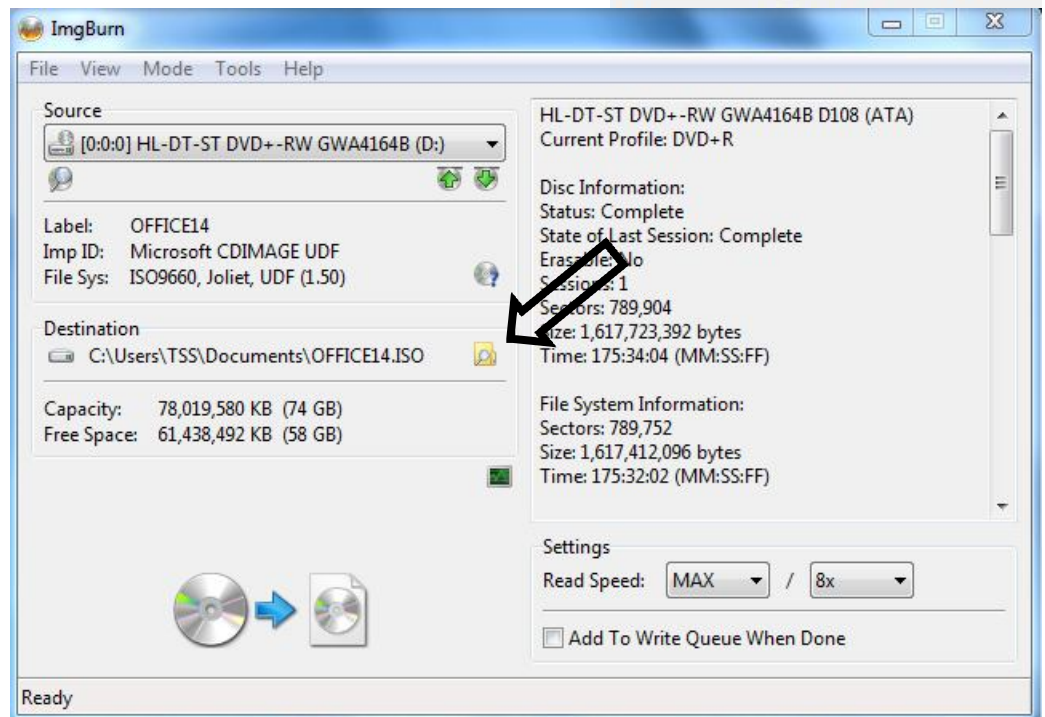
Create image file from disc



Click the **Create image file from disc** button on the main menu.

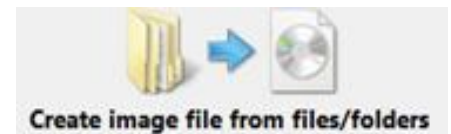
Click the **browse** button to choose a file location and file name for the ISO file.

Click the **Create image file from disc** button.



Create image file from files/folders

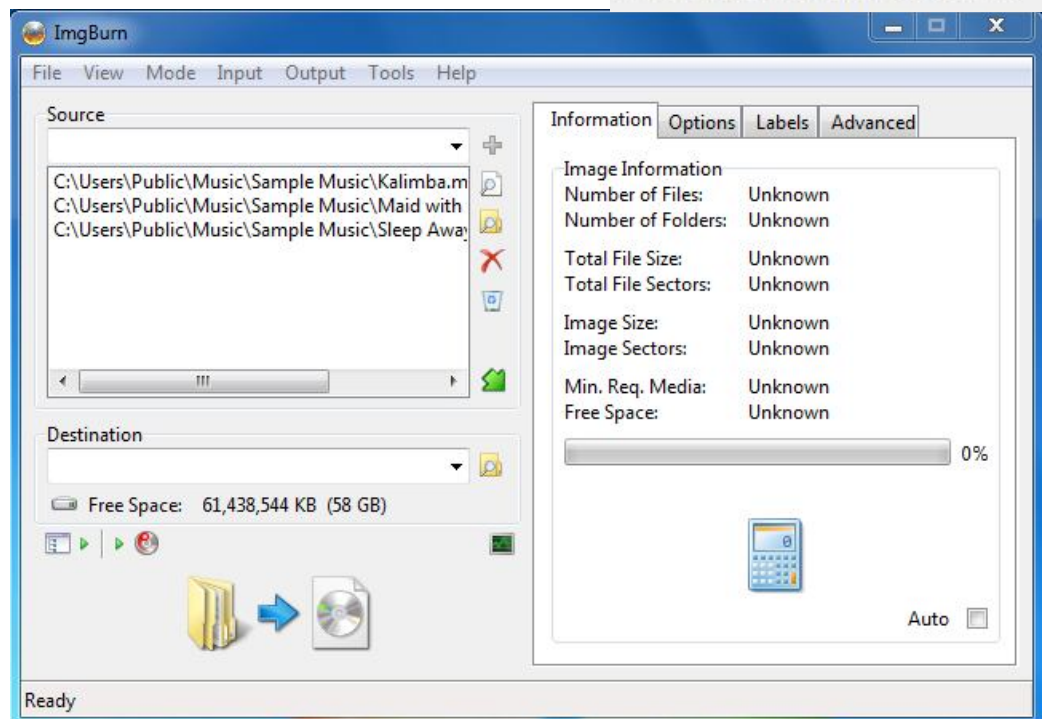
Click on the **Create image file from files/folders** button.



Insert blank CD/DVD.

Press the **Create image file from files/folders** button.

You can change the name of the disc in the next window.



Verify disc

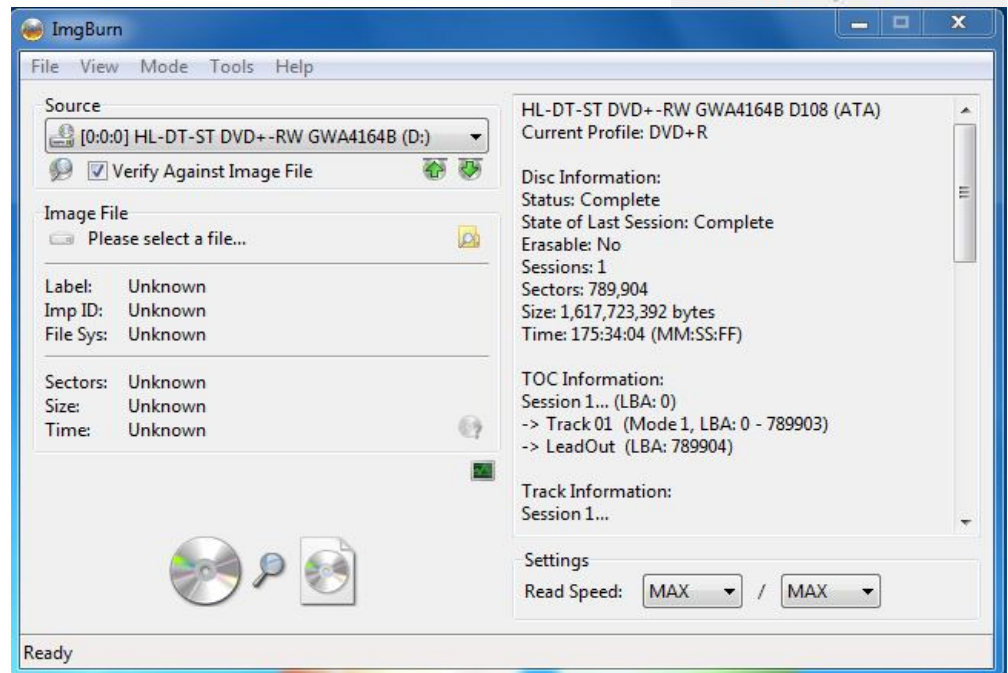


Choose **Verify disc** from the main menu.

Insert CD/DVD in the computer.

Press the **Verify disc** button.

“Operation Successfully Complete” message will show if disc is operating normally.



Discovery

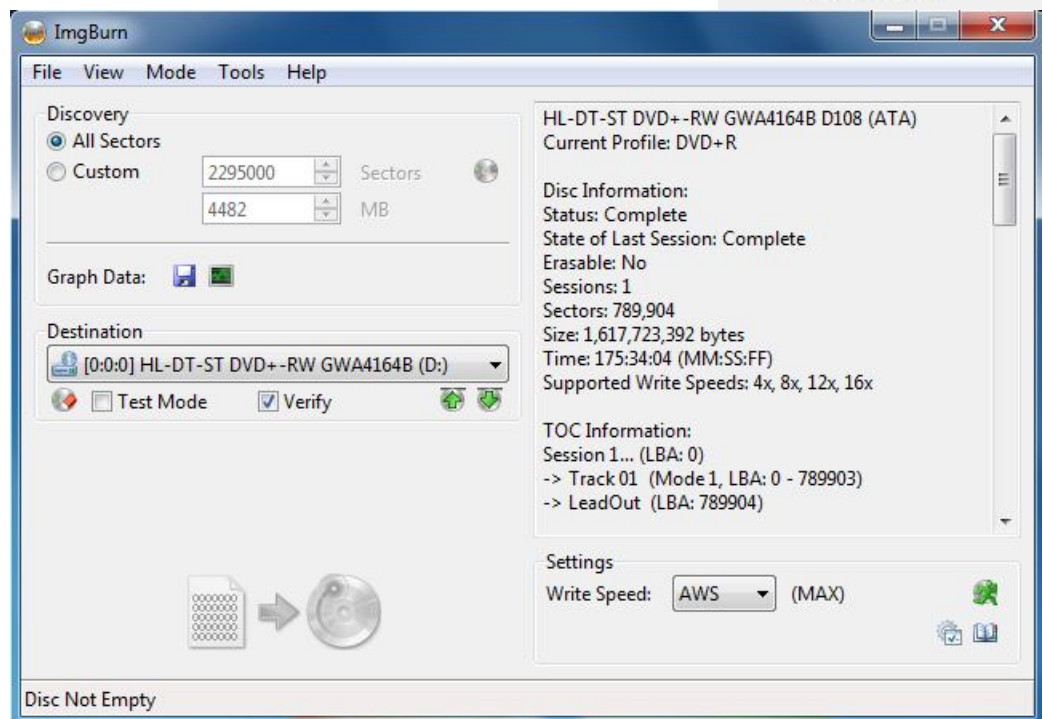


Choose **Discovery** from the main menu.

Insert CD-RW / DVD-RW into computer.

Information will be displayed on the right side of the window.

Select the **Discovery** button to erase all data on the disk.



Additional information: [Advanced Settings](#), [Full User Guide](#).